



Saint Stephen's College
CRICOS Provider Number 01938G

Individual Short Stay & Study Tour Programs 2026



Our campus

Virtual Tour: <https://saintstephenscollege.youtour.com.au/#>



Saint Stephen's College
CRICOS Provider Number 01938G



Developing character, inspiring hope

+61 7 5573 8600 | saintstephenscollege.net.au



Our campus covers an area of 10.9 hectares or 109,000 square metres. Located in one of the vibrant green spaces of the Gold Coast, our college is the optimal environment for exploration and innovation.

Developing character, inspiring hope

+61 7 5573 8600 | saintstephenscollege.net.au



Saint Stephen's College
CRICOS Provider Number 01938G

TERM ONE, 2026

TERM ONE DATES	TUESDAY 27 JANUARY TO THURSDAY 2 APRIL (10 Weeks)
New Student Orientation Assembly and Technology Workshops for <i>new students</i> Students Return	Friday 23 January Tuesday 27 January – Prep to Year 7 and Year 12 Wednesday 28 January – All other Year Levels
Student Free Days	Monday 19 January – Friday 23 January
Public Holidays	Australia Day: Monday 26 January
School Holidays	Friday 3 April – Sunday 19 April

TERM TWO, 2026

TERM TWO DATES	TUESDAY 21 APRIL to Friday 19 JUNE (9 Weeks)
Students Return	Tuesday 21 April
Student Free Day	Monday 20 April
Public Holidays	ANZAC Day: Saturday 25 April Labour Day: Monday 4 May
School Holidays	Saturday 20 June – Sunday 12 July

TERM THREE, 2026

TERM THREE DATES	TUESDAY 14 JULY TO FRIDAY 18 SEPTEMBER (10 Weeks)
Students Return	Tuesday 14 July
Student Free Days	Monday 13 July Friday 4 September
Public Holidays	Gold Coast Show: 28 August
School Holidays	Saturday 19 September – Sunday 4 October

TERM FOUR, 2026

TERM FOUR DATES	TUESDAY 6 OCTOBER TO WEDNESDAY 2 DECEMBER (8 ½ Weeks)
Students Return	Tuesday 6 October
Public Holidays	King's Birthday: Monday 5 October
School Holidays Commence	Thursday 3 December

2026 TERM DATES FOR STUDENTS



2026 Short Stay and Study Tour Programs

Saint Stephen's College
CRICOS Provider Number 01938G

At Saint Stephen's College, we offer both individual short stay programs as well as study tours. Each program is unique to our college and offers a variety of experiences and learning opportunities. All programs run for a minimum of four weeks.

Study Tours or groups are given priority during our peak periods of the year (Term One and Term Three). A Study Tour is defined as a group of 10 students or more.

JUNIOR SHORT STAY PROGRAM

- Offered to students in Prep to Year Six

SENIOR SHORT STAY PROGRAM

- Offered to students in Years Seven to Ten



Year Level Placement Policy

2026

Date of Birth	Year Level
1/7/2007 – 30/06/2008	12
1/7/2008 – 30/06/2009	11
1/7/2009 – 30/06/2010	10
1/7/2010 – 30/06/2011	9
1/7/2011 - 30/06/2012	8
1/7/2012 – 30/06/2013	7
1/7/2013 – 30/06/2014	6
1/7/2014 – 30/06/2015	5
1/7/2015 – 30/06/2016	4
1/7/2016 – 30/06/2017	3
1/07/2017 – 30/06/2018	2
1/07/2018 – 30/06/2019	1
1/07/2019 – 30/06/2020	P

Students are placed one academic year below their age-appropriate year level unless they have spent a minimum of two years in a school where all subjects are taught in English, or they have a strong level of English as ascertained by a certified English language assessment and can provide these reports upon application.





JUNIOR SHORT STAY PROGRAM

Prep > Year Six

Saint Stephen's College
CRICOS Provider Number 01938G

Dates

- Term One | Monday 23 February > Friday 20 March 2026 (4 week program) ***excludes Prep**
- Term Two | Subject to application
- Term Three | Thursday 16 July > Wednesday 12 August 2026 (4 week program) **OR**
Tuesday 14 July > Friday 18 September 2026 (10 week program)
- Term Four | Subject to application

Individuals & Groups – Program

- Prep > Year 2 | 5 days mainstream integration with a buddy
- Year 3 > Year 6 | 3 days mainstream integration with a buddy, 1 day excursion, 1 day Intensive English
- No homestay – must reside with parent or guardian

**Program subject to change*





JUNIOR SHORT STAY PROGRAM

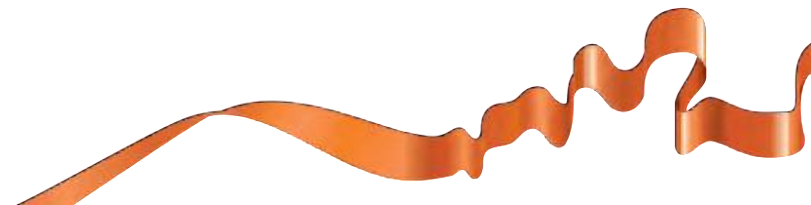
Availability (as at November 2025)

Saint Stephen's College
CRICOS Provider Number 01938G

Year Level	Term One	Term Three
Prep	CLOSED	CLOSED
Year One	Available	CLOSED
Year Two	Available	CLOSED
Year Three	Available	CLOSED
Year Four	Available	CLOSED
Year Five	Available	CLOSED
Year Six	Available	CLOSED

**Short stay positions are not offered in Prep in Term One*

**Program subject to change*





SENIOR SHORT STAY PROGRAM

Year Seven > Year Ten

Dates

- Term One | Monday 23 February > Friday 20 March 2026 (4 week program) **OR**
Wednesday 28 January > Thursday 2 April 2026 (9 week program)
- Term Two | Subject to application
- Term Three | Thursday 16 July > Wednesday 12 August 2026 (4 week program) **OR**
Tuesday 14 July > Friday 18 September 2026 (10 week program)
- Term Four | Subject to application

Individuals & Groups

- Minimum one day mainstream integration with a buddy (*example timetable reflects two*)
- Two to three days Intensive English ELICOS (mixed with other short stay students)
- One day excursion (mixed with other short stay students)
- Homestay available for students 13 years or older

**Program subject to change*





SENIOR SHORT STAY PROGRAM

Availability (as at November 2025)

Saint Stephen's College
CRICOS Provider Number 01938G

Year Level	Term One	Term Three
Year Seven	Available	Available
Year Eight	Available	Available
Year Nine	Available	Available
Year Ten	Available	Available

**Program subject to change*



Example Timetable | Junior (Prep to Year 2)

	MON	TUE	WED	THUR	FRI
Morning Routine 8.20 – 8.45am	Roll Mark	Roll Mark	Roll Mark	Roll Mark	Chapel
Period 1 8.45 – 9.25am	Literacy	Maths	Maths	Literacy	Spelling
Period 2 9.25 – 10.05am	Reading	Maths	Spanish	Partner Reading	Science
Period 3 10.05 – 10.45am	Spelling	Handwriting	Maths	Handwriting	Science
Morning Tea 10.45 – 11.05am					
Period 4 11.05 – 11.45am	Maths	Literacy	Library	Maths	Literacy
Period 5 11.45 – 12.25pm	Maths	Writing	Writing	Maths	Maths
Period 6 12.25 – 1.05pm	Class Novel	Reading	Reading	Music	Maths
Lunch 1.05 – 1.45pm					
Period 7 1.45 – 2.25pm	Music	HPE	HASS	Visual Art	Technology/STEAM
Period 8 2.25 – 3.05*	HPE	Novel Study	HASS	Health	Technology/STEAM

*This is an example of a Junior timetable (Prep > Year 2) and is subject to change

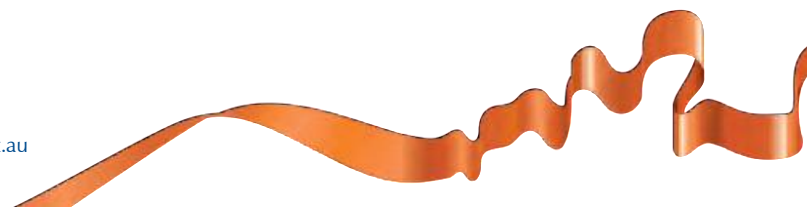
*Prep finishes at 2.50pm



Example Timetable | Junior (Year 3 to Year 6)

	MON	TUE	WED	THUR	FRI
Morning Routine 8.20 – 8.45am	Roll Mark	Roll Mark	Roll Mark	Roll Mark	Roll Mark
Period 1 8.45 – 9.25am	Chapel	Science	Drama	Excursion	Intensive English
Period 2 9.25 – 10.05am	Spelling	Science	Music		Intensive English
Period 3 10.05 – 10.45am	Class Novel	Physical Education	Literacy Rotation		Intensive English
Morning Tea 10.45 – 11.05am					
Period 4 11.05 – 11.45am	Problem Solving	Art	Spelling	Excursion	Intensive English
Period 5 11.45 – 12.25pm	Problem Solving	Art	Maths		Intensive English
Period 6 12.25 – 1.05pm	Digital Technology	Grammar/ Comprehension	Maths		Intensive English
Lunch 1.05 – 1.45pm					
Period 7 1.45 – 2.25pm	Genius Hour	Maths	Physical Education	Excursion	Intensive English
Period 8 2.25 – 3.05	Genius Hour	Maths	Digital Technology		Intensive English

*This is an example of a Junior timetable (Year 3 > Year 6) and is subject to change



Example Senior Timetable | (Year 7 to Year 10)

	MON	TUE	WED	THUR	FRI
Morning Routine 8.20 – 8.45am	Roll Call	Roll Call	Roll Call	Roll Call	Roll Call
Period 1 8.45 – 9.25am	Mathematics	English	Intensive English ELICOS	Excursion	Intensive English ELICOS
Period 2 9.25 – 10.05am	Mathematics	English			
Period 3 10.05 – 10.45am	HPE	Humanities			
Morning Tea 10.45 – 11.05am					
Period 4 11.05 – 11.45am	Humanities	Mathematics	Intensive English ELICOS	Excursion	Intensive English ELICOS
Period 5 11.45 – 12.25pm	Science	Mathematics			
Period 6 12.25 – 1.05pm	Science	HPE			
Lunch 1.05 – 1.45pm					
Period 7 1.45 – 2.25pm	Business Studies	Design	Intensive English ELICOS	Excursion	STEAM/E-SPORT
Period 8 2.25 – 3.05	Business Studies	Design			

*This is an example of a Senior timetable (Year 7 > 10) and is subject to change



Individual Short Stay and Study Tour International Fee Schedule 2026

*Note: Short Stay student study 4 weeks or longer.
Study Tours are a minimum of 10 students.*

ALL fees are quoted in Australian Dollars (AUD) and must be paid in full to secure an individual short stay position and 10 % deposit required to secure a study tour booking, balance payable three month prior to commencement.

Admission Fees	
Study Tours (minimum 10 students)	\$0
Individual Visitors	\$500

	Single or less than 10	Groups
Homestay Placement Fee	\$450	> 10 = \$350
Homestay Fee per week (students 13 years and over)		
Single	\$665	
Double	\$595	
Airport transfers Brisbane & Coolangatta, Gold Coast	\$260	

Uniforms (4 week program)	\$300
Uniforms (10 week program)	\$540

Tuition Fees per week (minimum 4 weeks)	\$900
---	-------

The above mentioned fees may change from one year to the next. You will be required to pay the new fees as they are introduced.

Library



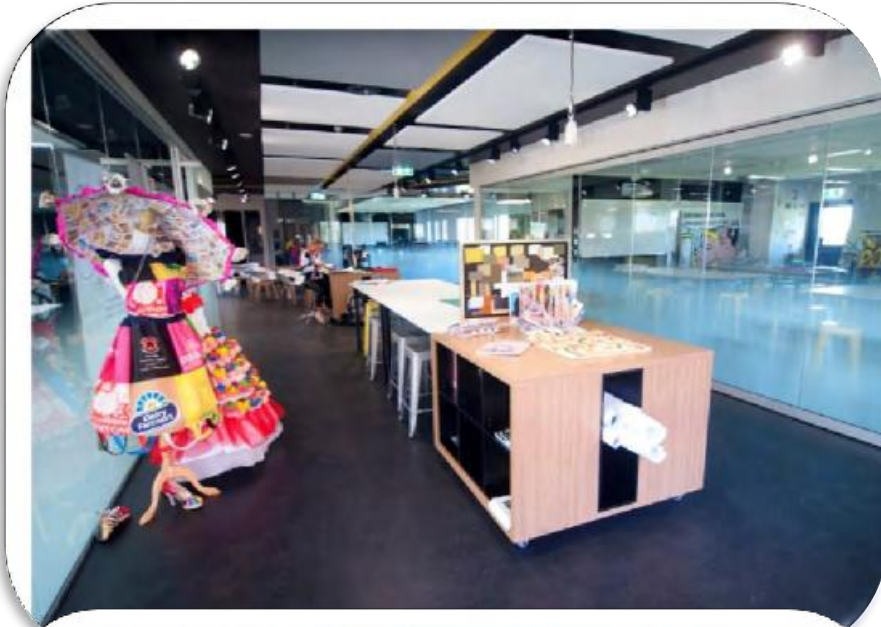
Science in Action



Language Centre



Arts and Applied Technology



Centre of Music Excellence



Developing character, inspiring hope

+61 7 5573 8600 | saintstephenscollege.net.au

Junior College



Sports Hall



International Department



Excursions

Saint Stephen's College
CRICOS Provider Number 01938G



- You will experience some of Australia's scenery, art exhibitions and wildlife
- Applicable to Year 3 > Year 10
- May not apply to all Individual Short Stay students



Intensive English and Cultural Activities

Saint Stephen's College
CRICOS Provider Number 01938G



- Intensive English classes will focus on writing, running dictation, speaking, reading and vocabulary
- Cultural activities will focus on creative arts, indigenous education and Australia's history and culture
- Activities may also extend on the students' knowledge of the weekly excursion (if applicable)

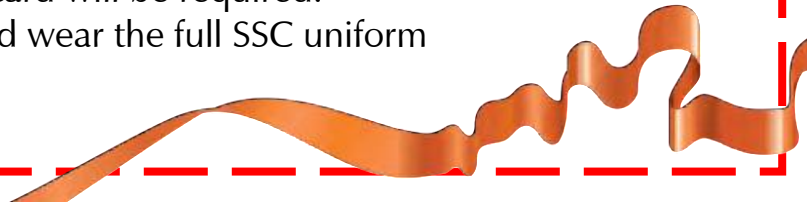
Application Criteria

Students must adhere to the following application criteria. It is important to check that documentations is accurate, completed and signed where necessary, before submission.

Please submit the following upon application to international@ssc.qld.edu.au

- [Application Form](#) (*signature required*)
- [Medical Form](#) (*signature required*)
- Copy of valid student passport
- Most recent academic transcript
- Indication of the students English Proficiency (Beginner, Intermediate, Advanced)
- Copy of travel/medical insurance policy (once obtained)

Reminders

- Students will need to apply for a tourist/visitor visa to enter Australia
 - Homestay is only available for students 13 years or older
 - The college bus service is not available for short stay students – transport to and from school must be arranged by parents or host families
 - Students must currently be studying as a student in a school to apply for this program.
 - Students must have adequate travel/medical insurance in Australia and provide a copy of this to the school
 - Students must commence and conclude their courses on the dates set out in their program
 - All groups (10+) must be accompanied by an English-speaking staff member that is on campus/excursions at all times during school hours – a blue card will be required.
 - All short stay visiting international students must purchase and wear the full SSC uniform
- 



Saint Stephen's College
CRICOS Provider Number 01938G

Contact our Team

International Department

Email: International@ssc.qld.edu.au

Tel: +61 7 55738661

Fax: +61 7 55738688

PO BOX 441

Oxenford Qld 4210

AUSTRALIA

View our College website for more information on
Saint Stephen's College www.saintstephenscollege.net.au



Sam Holmes



Paula Craft



Trisha Cochrane



Sarah Hurley

